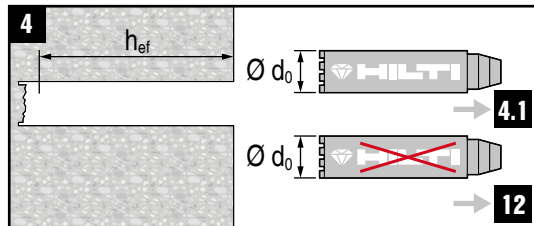
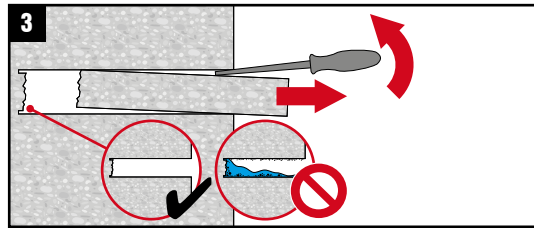




2

HIT-RE 500 V3
 HIT-HY 200-A
 HIT-HY 200-R
 HIT-HY 200-R V3*

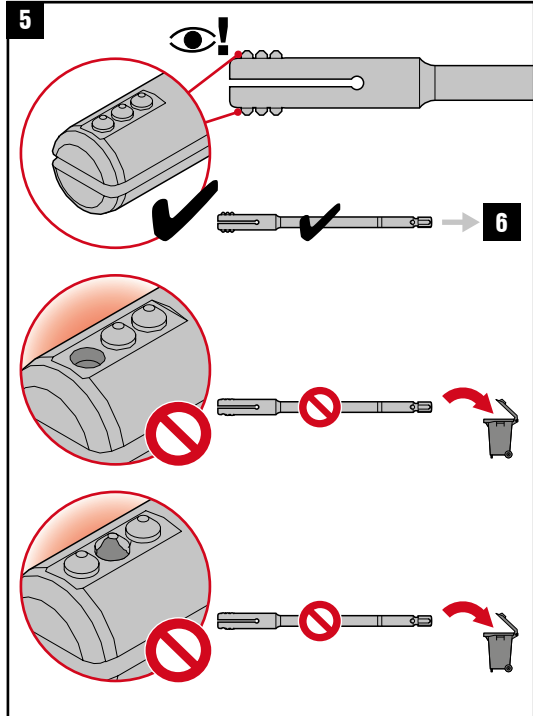


*Not covered under ICC Approval

4.1

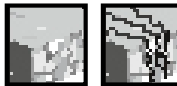
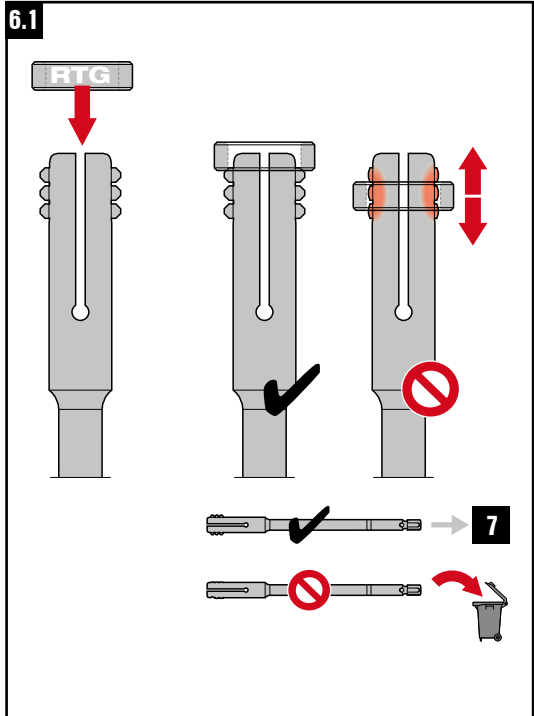
TE-YRT	Ø d ₀ [mm]	SPX-T (Abrasive)	SP(X)-H (Abrasive) SP(X)-L (Abrasive) SPX-L Handheld
18/320	18	✓	✓
20/320	20	✓	✓
22/400	22	✓	✓
25/400	25	✓	✓
28/480	28	✓	✓
30/540	30	✓	✓
32/500	32	✓	✓
35/600	35	✓	✗

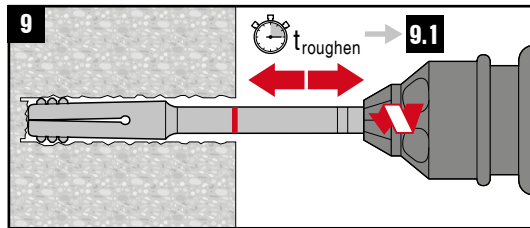
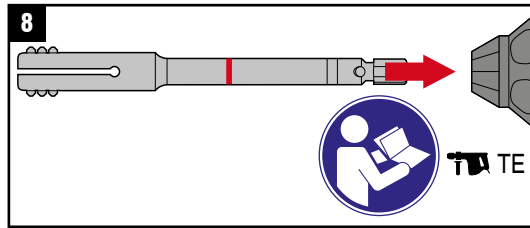
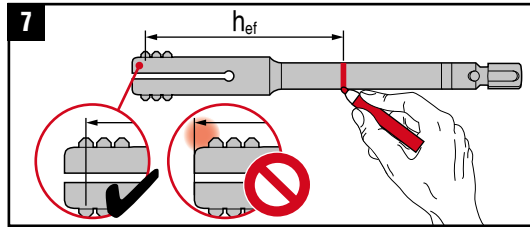
TE-YRT	Ø d ₀ [inch]	SPX-T (Abrasive)	SP(X)-H (Abrasive) SP(X)-L (Abrasive) SPX-L Handheld
3/4" / 12 1/2"	3/4"	✓	✓
7/8" / 15"	7/8"	✓	✓
1" / 17 1/2"	1"	✓	✓
1 1/8" / 20"	1 1/8"	✓	✓
1 3/8" / 25"	1 3/8"	✓	✗



6

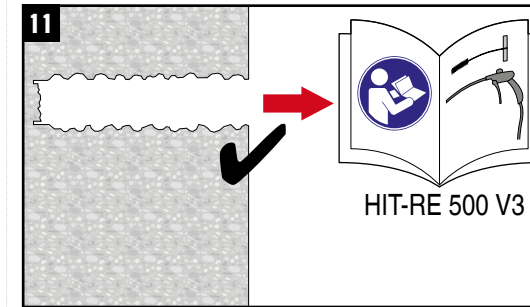
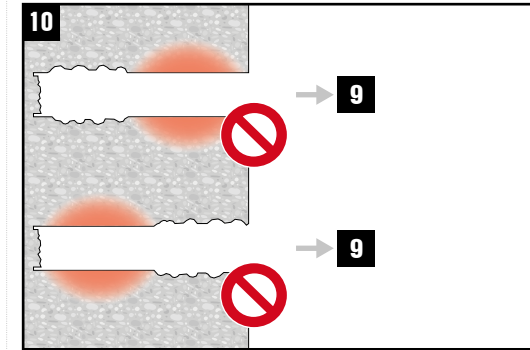
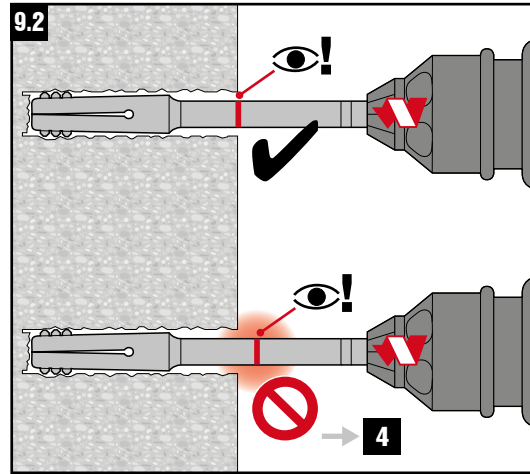
TE-YRT	RTG
TE-YRT 18/320	RTG 18
TE-YRT 20/320	RTG 20
TE-YRT 22/400	RTG 22
TE-YRT 25/400	RTG 25
TE-YRT 28/480	RTG 28
TE-YRT 30/540	RTG 30
TE-YRT 32/500	RTG 32
TE-YRT 35/600	RTG 35
TE-YRT 3/4" / 12 1/2"	RTG 3/4"
TE-YRT 7/8" / 15"	RTG 7/8"
TE-YRT 1" / 17 1/2"	RTG 1"
TE-YRT 1 1/8" / 20"	RTG 1 1/8"
TE-YRT 1 3/8" / 25"	RTG 1 3/8"





9.1

h_{ef} [mm]	$t_{roughen}$ (= $h_{ef}/10$)
0 ... 100	10 sec
101 ... 200	20 sec
201 ... 300	30 sec
301 ... 400	40 sec
401 ... 500	50 sec
501 ... 600	60 sec
h_{ef} [inch]	$t_{roughen}$ (= $h_{ef} \cdot 2.5$)
0 ... 4	10 sec
4.01 ... 8	20 sec
8.01 ... 12	30 sec
12.01 ... 16	40 sec
16.01 ... 20	50 sec
20.01 ... 25	60 sec



12

\diamond $\emptyset d_0$ [mm]	TE-YRT
17,9 ... 18,2	TE-YRT 18/320
19,9 ... 20,2	TE-YRT 20/320
21,9 ... 22,2	TE-YRT 22/400
24,9 ... 25,2	TE-YRT 25/400
27,9 ... 28,2	TE-YRT 28/480
29,9 ... 30,2	TE-YRT 30/540
31,9 ... 32,2	TE-YRT 32/500
34,9 ... 35,2	TE-YRT 35/600
\diamond $\emptyset d_0$ [inch]	TE-YRT
0.764 ... 0.776	TE-YRT 3/4" / 12 1/2"
0.862 ... 0.874	TE-YRT 7/8" / 15"
1.008 ... 1.020	TE-YRT 1" / 17 1/2"
1.146 ... 1.157	TE-YRT 1 1/8" / 20"
1.374 ... 1.386	TE-YRT 1 3/8" / 25"



TE-YRT



ICC-ES ESR - 3814